

FINISHES SCHEDULE

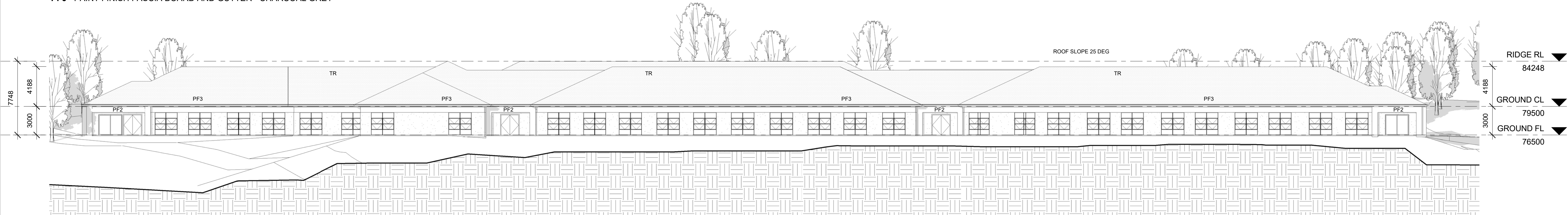
AF - ALUMINIUM FRAMED SLIDING WINDOWS - WOODLAND GREY
AFA - ALUMINIUM FRAMED AWNING WINDOWS- WOODLAND GREY
AFSD - ALUMINIUM FRAMED SLIDING DOOR - WOODLAND GREY

TR - CONCRETE TILED ROOF - BORAL LINEA CHARCOAL GREY OXIDE
TF - NATURAL TIMBER FINISH - WEATHERTEX

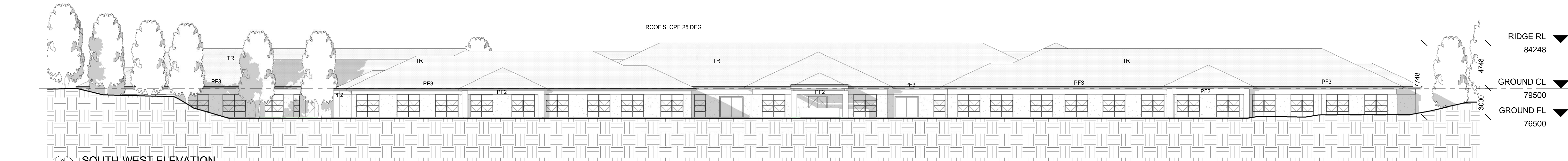
PF1 - PAINT FINISH BROADWALL AND AC SHEETING - LIGHT GREY
PF2 - PAINT FINISH RENDER SURROUND AND AC SHEETING PORCHE COCHRE- WHITE
PF3 - PAINT FINISH FASCIA BOARD AND GUTTER - CHARCOAL GREY

CONSTRUCTION NOTES

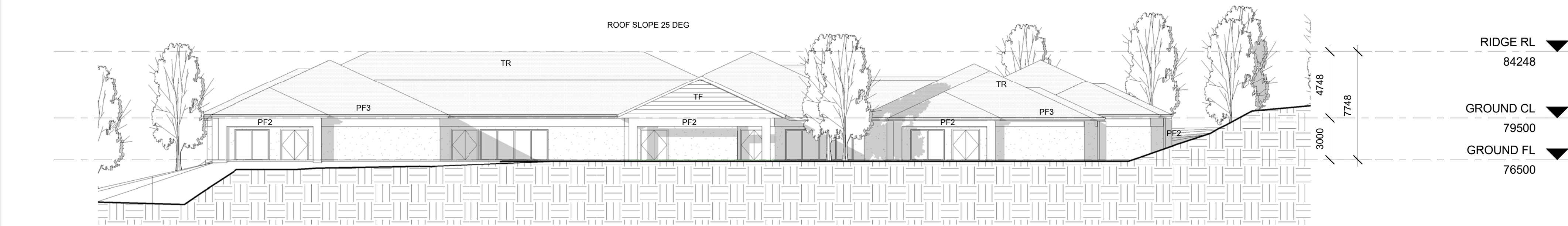
GROUND FLOOR TO BE CONCRETE TO ENGINEERS DETAILS WITH STEEL FRAMED
EXTERNAL WALLS AND ROOF STRUCTURE.
EXTERNAL WALLS TO BE HEBEL, 90MM PANEL CLAD TO WINDOW HEAD HEIGHT WITH
VILLABOARD WITH METAL FLASHING TO SUIT OVER
INTERNAL WALLS TO BE GYROCK LINED HEBEL



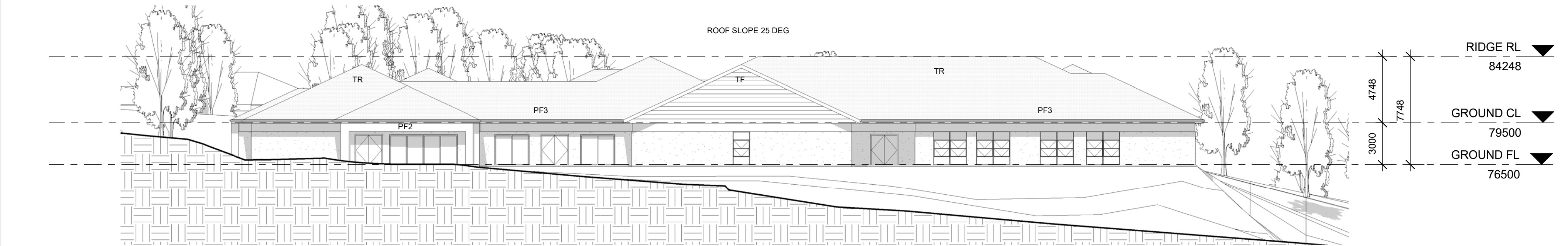
1 NORTH-EAST ELEVATION
1 : 200



2 SOUTH-WEST ELEVATION
1 : 200



3 NORTH-WEST ELEVATION
1 : 200



4 SOUTH-EAST ELEVATION
1 : 200

A	09.05.2017	DEVELOPMENT APPLICATION SET
NO.	DATE:	DETAILS:

Amendments:

Stephen Jones Associates

p. 02 9977 2240
m. 0418 866 784
e. sj@stephenjonesassociates.com
w. www.stephenjonesassociates.com

Registered Architect Gary Finn No. 5774 (NSW)

Project:
SENIORS LIVING DEVELOPMENT
LOT 1, DP 780801
WINDWARD WAY MILTON, NSW 2538

Drawing:
RESIDENTIAL CARE FACILITY
ELEVATIONS

Scale: 1:200 @A1 Job No: 15.16 Drawing No:
Date: 09.05.2017
Drawn: SJ
DA21
This drawing is copyright and must not be retained, copied or used without consent of designer.